

## EWC MANUAL WATER SOFTENER RANGE



MODEL	VOLUME OF WATER SOFTENED AGAINST HARDNESS - litres				HEIGHT mm	SALT kg	
	°f	30	40	60			80
	°d	16.5	22	33			44
	ppm	300	400	600	800		
WFT8		1000	900	700	500	400	1
WFT12		1500	1350	1050	750	500	1.5
WFT16		2100	1800	1400	1000	600	2
WFT20		3000	2600	2100	1500	900	2.5

### TECHNICAL DATA

Flow Rate (litres per hour)	Water Pressure (bar)		Water Temperature (deg. C)	
	Minimum	Maximum	Minimum	Maximum
<b>1000</b>	<b>1</b>	<b>5.5</b>	<b>4</b>	<b>15</b>

This leaflet is an integral part of the product. Please read the warnings provided carefully as these provide important information concerning the safe installation, use and servicing of this product. This water softener is intended to be used to soften cold drinking water only, any other use is considered improper and as such unreasonable.

- **WARNING: use only sodium chloride NaCl in large grains (kitchen salt) for regeneration. The use of any other chemical substances or products is strictly forbidden.**

#### Figure 1 LEGEND

- A. Water Inlet
- B. Water Outlet
- C. Water Inlet Tap
- D. Water Outlet
- E. Pressure Relief Hose
- F. Regeneration Hose
- G. Cover Knob
- I. Check Valve Tap

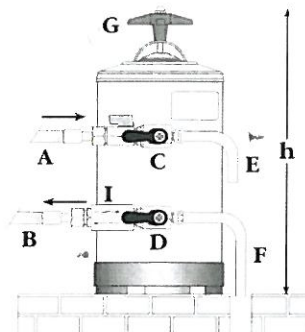


Fig 1: Installation Drawing

### INSTALLATION.

After removing the packaging, make sure that the water softener isn't damaged. Keep the packaging materials (plastic bags, cardboard box etc.) out of the reach of children as they can be dangerous. The water softener should be installed in full observance of the current laws, following the manufacturer's instructions and by experts. If installed incorrectly, the equipment may cause injuries to people and animals and damage to property, in which case the manufacturer cannot be held liable.

- Install the water softener in rooms where the temperature is minimum 5°C and maximum 30°C (Centigrade).

## CONNECTION TO THE WATER MAINS (Refer to Fig 1)

- The user must install a tap between the water mains and the water softener so that the water can be turned off in an emergency, plus a check valve to avoid any pressure returns.
- Connect the water inlet and outlet hoses to the water softener and make sure these are tightened properly.
- Place the drain hose directly in a drain.

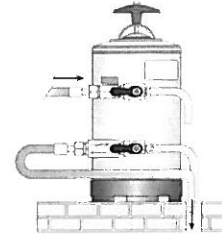
## COMMISSIONING

### Rinsing of resins (Refer to Fig 2)

Place the outlet hose in a drain.

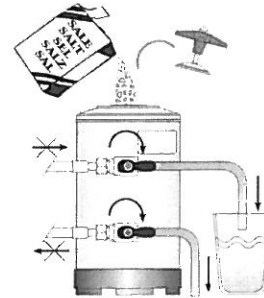
Turn the taps levers to the left and open the water inlet; let the water flow until clear, then stop the inlet water and connect the outlet hose to the machine to be supplied.

Fig 2



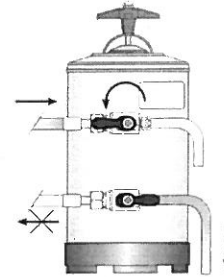
### Routine Regeneration Fig 3B

- Place the depression hose in a bucket. Turn the taps levers to the right and wait for the pressure to drop. Remove the cover by unscrewing the knob and then add the salt in the amount indicated to suit the model (see table 1).
- **WARNING:** Remove any salt from the seal on the cover.



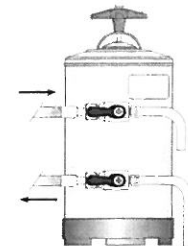
### Regeneration Mode Fig 3C

- Replace the cover and tighten the knob securely, then move the inlet tap lever to the left.
- **WARNING:** Remove any salt from the top of the water softener.
- Let the salty water flow from the drain hose until the water is soft (about 40 minutes).



### Normal Operating Mode Fig 3A

- Return the water softener to normal working conditions by turning the outlet tap lever to the left.
- Regeneration completed.
- **WARNING:** the equipment connected to the water softener is not supplied during regeneration.



To ensure the efficiency of the water softener at all times, we recommend routine regeneration to suit the use made of the water softener and the hardness of the water used.